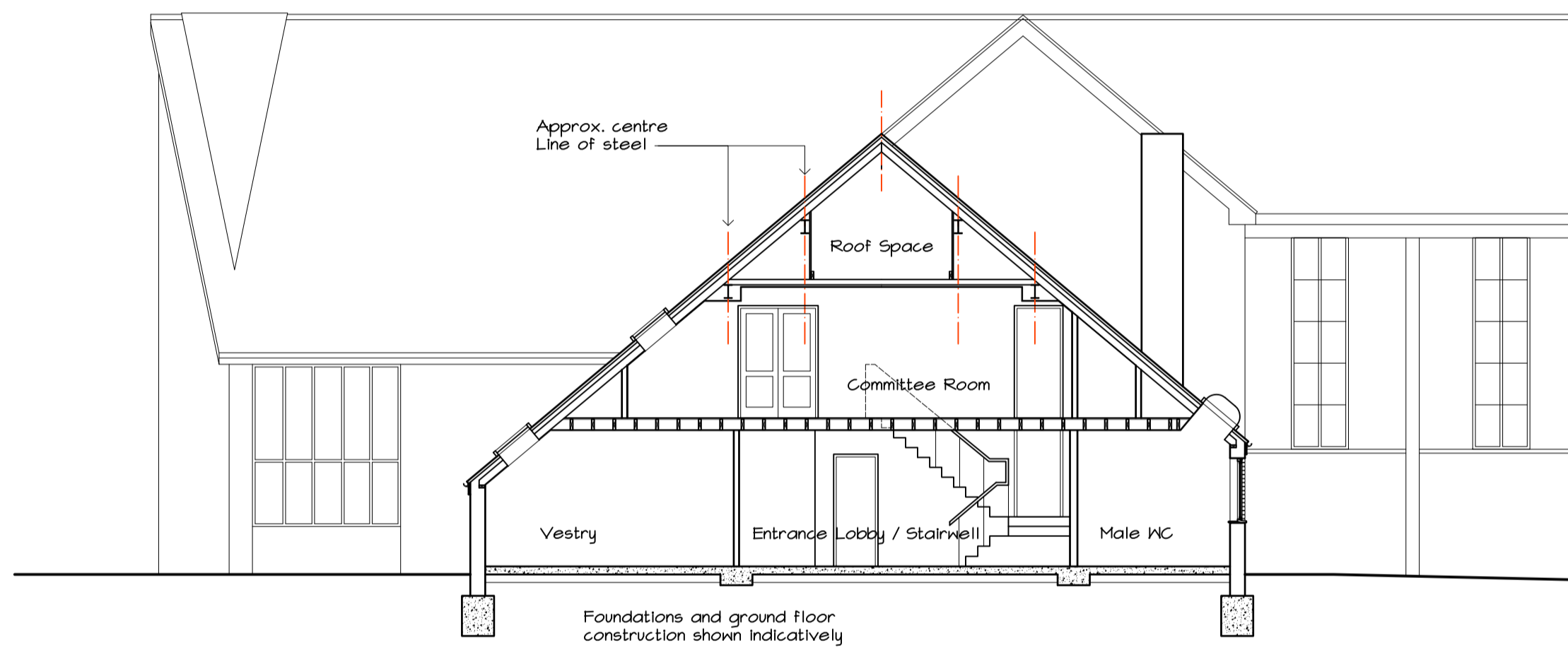
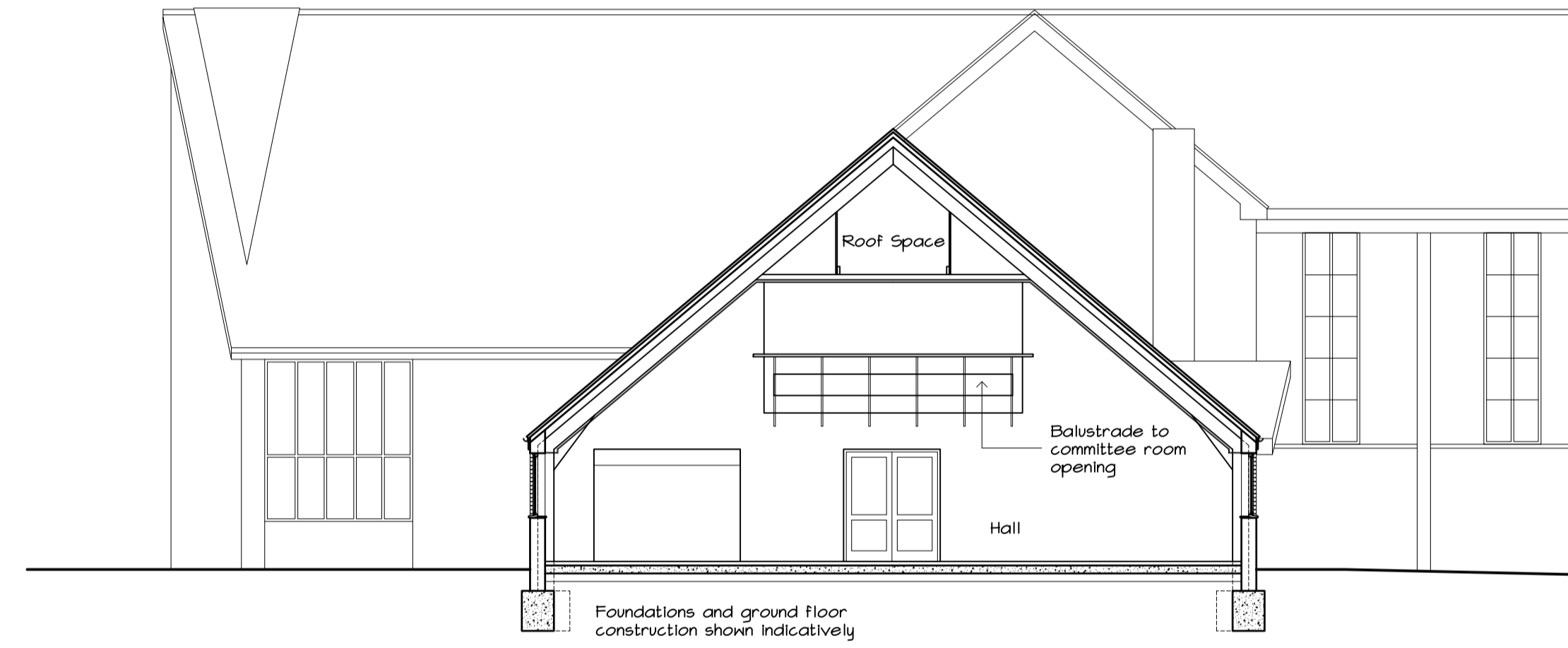


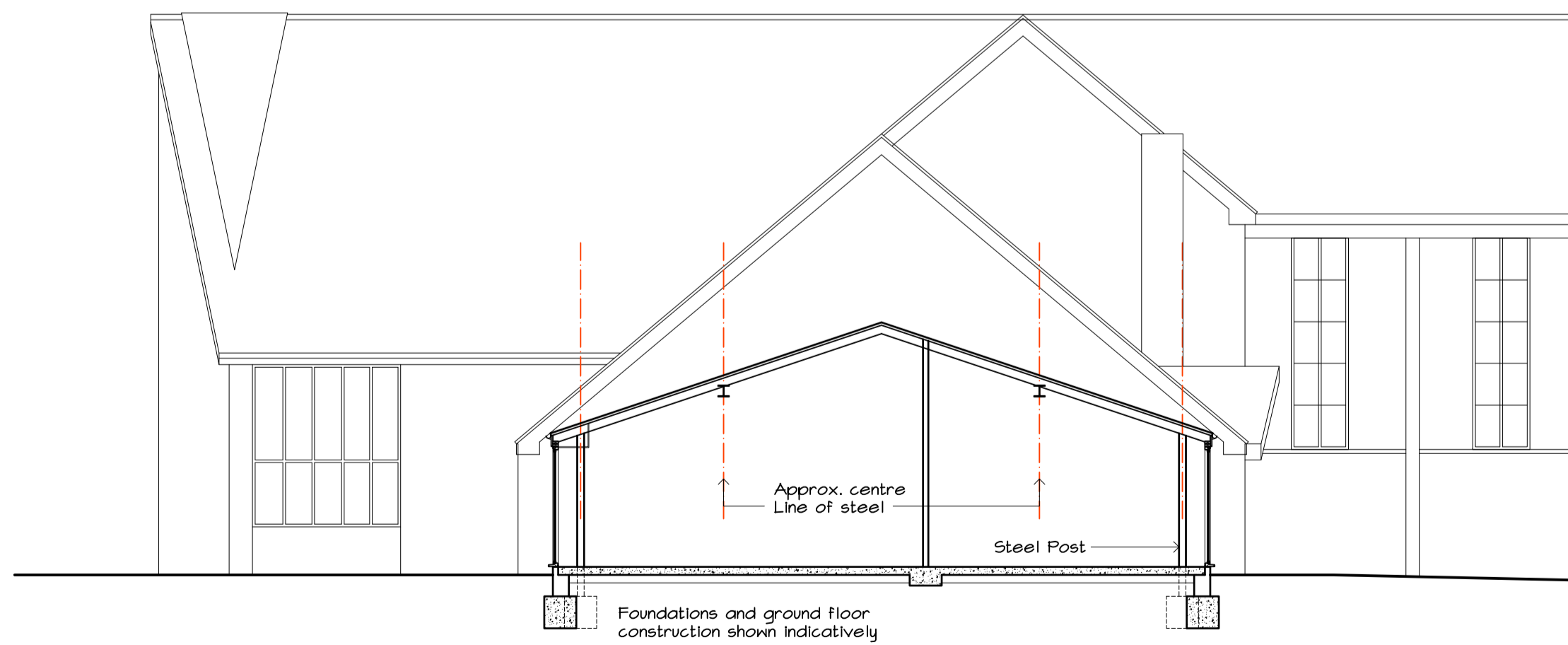
AA
007 Mackworth Community Centre, Mackworth
Section A-A 1:100



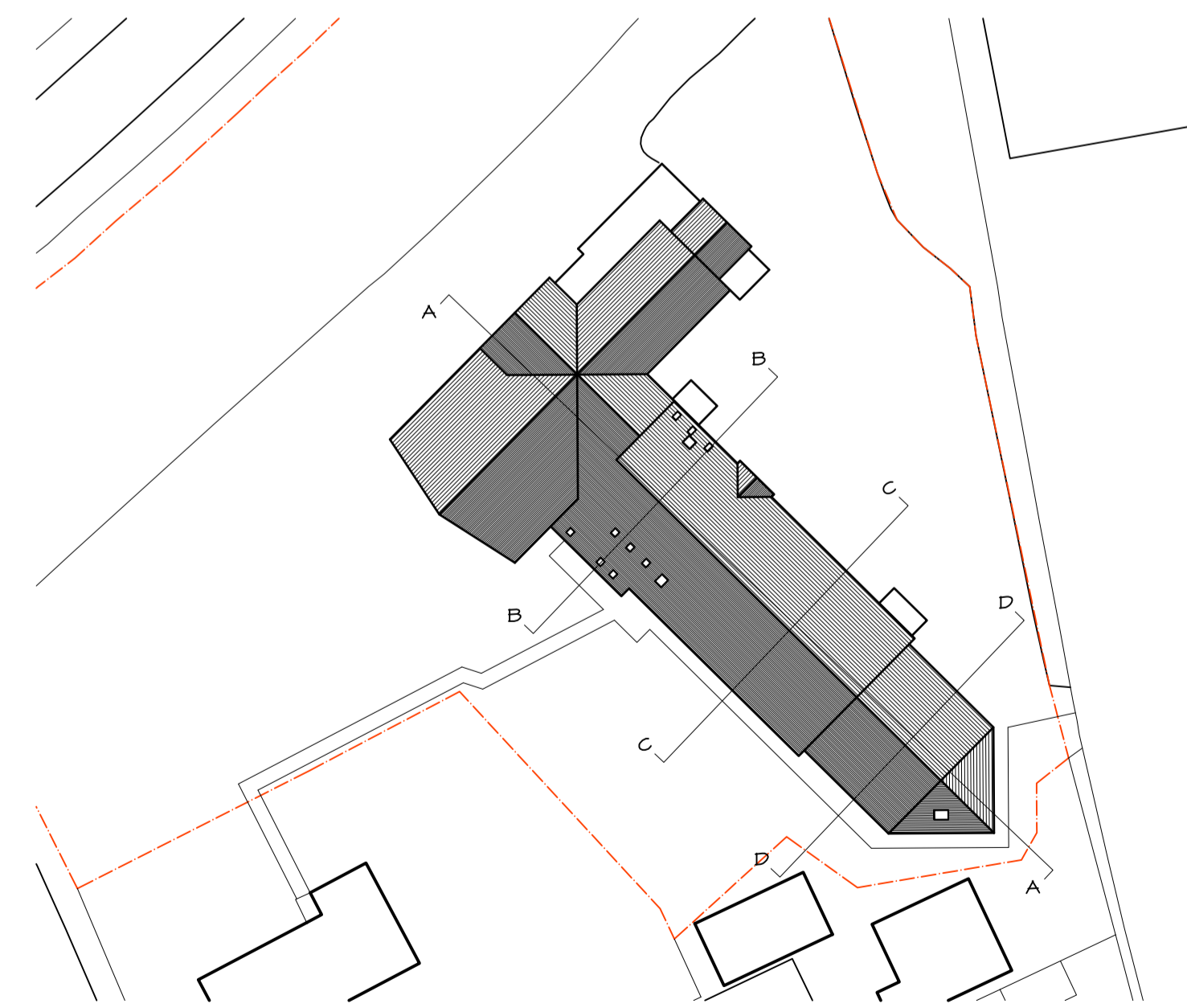
BB
007 Mackworth Community Centre, Mackworth
Section B-B 1:100



CC
007 Mackworth Community Centre, Mackworth
Section C-C 1:100



DD
007 Mackworth Community Centre, Mackworth
Section D-D 1:100



007 Mackworth Community Centre, Mackworth
Section Legend 1:500

NOTES

1. This drawing is copyright and issued to you in confidence. It must not be copied, used or disclosed, in whole or in part, to third parties without our written permission. It remains the property of JUSTIN SMITH ARCHITECT LIMITED and must be returned on request. ©

NOTE: All dimensions are in millimetres unless stated otherwise. If in doubt ask. Do not scale from this drawing.

DRAWING INFORMATION
This CAD drawing is plotted from file: A10-009A2.1007
This CAD drawing contains the Xref's: A10-009A2.2/E_x_sect

COPYRIGHT ©

REVISIONS

NORTH

| | | | |
|---|--|------------------------|----------------------------|
| CLIENT Paul Pegg | Justin Smith Architect Limited | | |
| PROJECT Refurbishment at: Mackworth Community Centre, Mackworth | Friar Gate Studios, Ford Street, Derby, DE1 1EE | | |
| DRAWING Existing Sections | T: 01332 258350 E: mail@justin-smith-architects.co.uk W: www.justin-smith-architects.co.uk | | |
| PROJECT NO. A10-009 | DWG. NO. 007 | REV. 007 | STATUS For Info. |
| DATE April 2010 | SCALE 1:100 | DWG. SIZE A1 | DRAWN SCG |

JUSTIN SMITH
ARCHITECTS