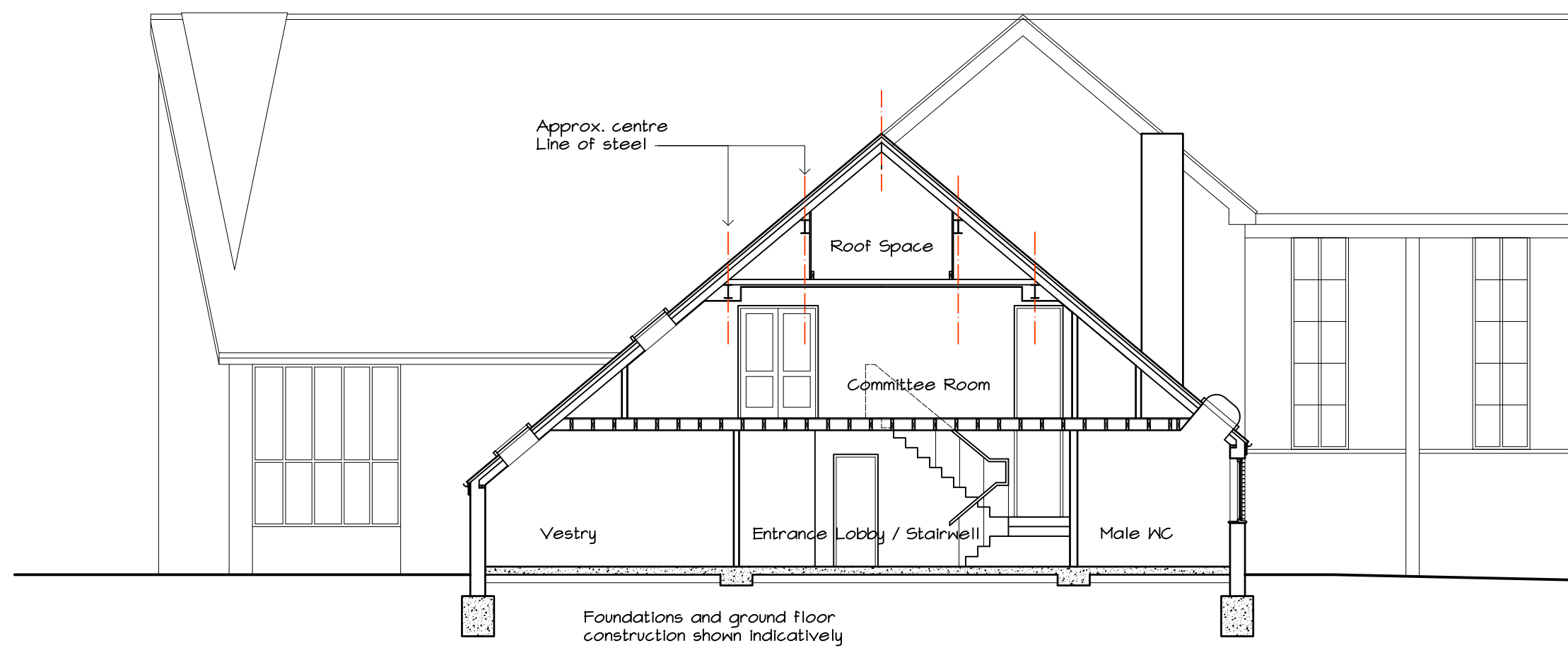
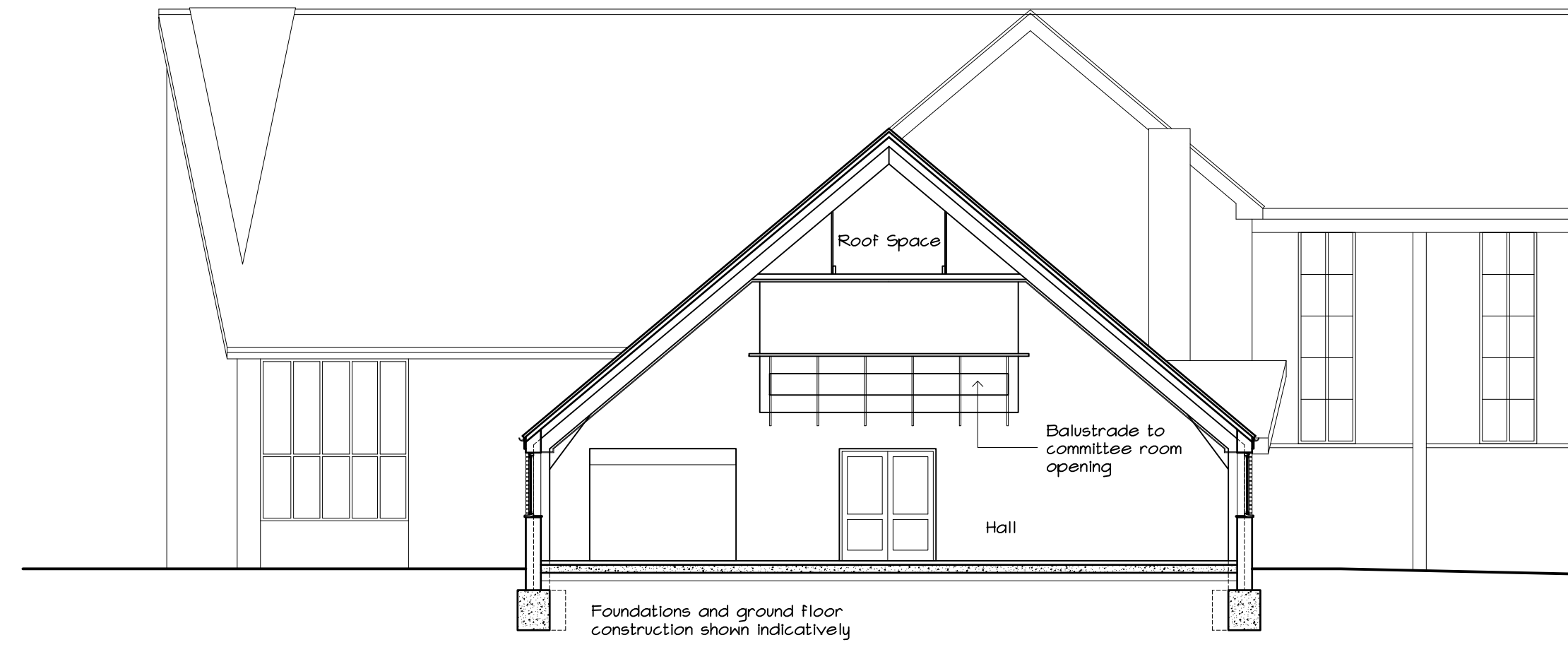


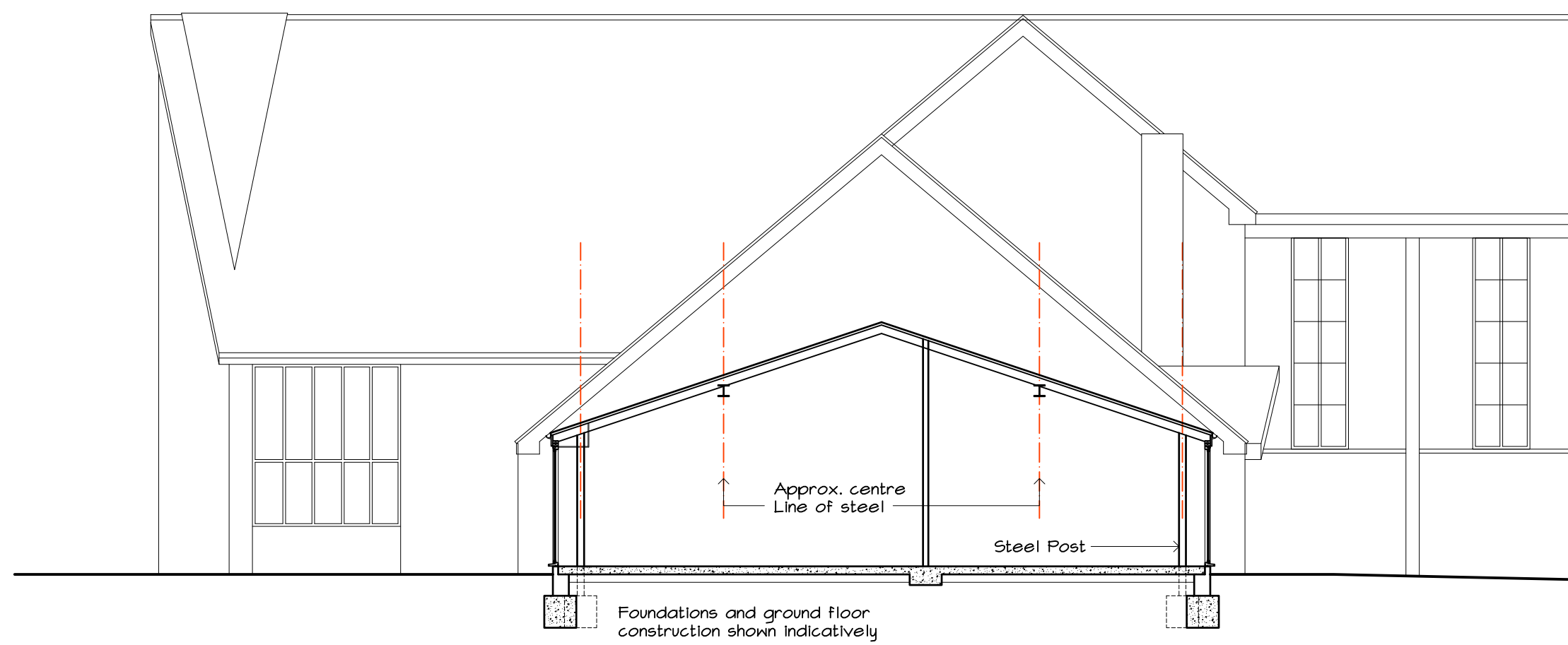
AA  
007 Mackworth Community Centre, Mackworth  
Section A-A 1:100



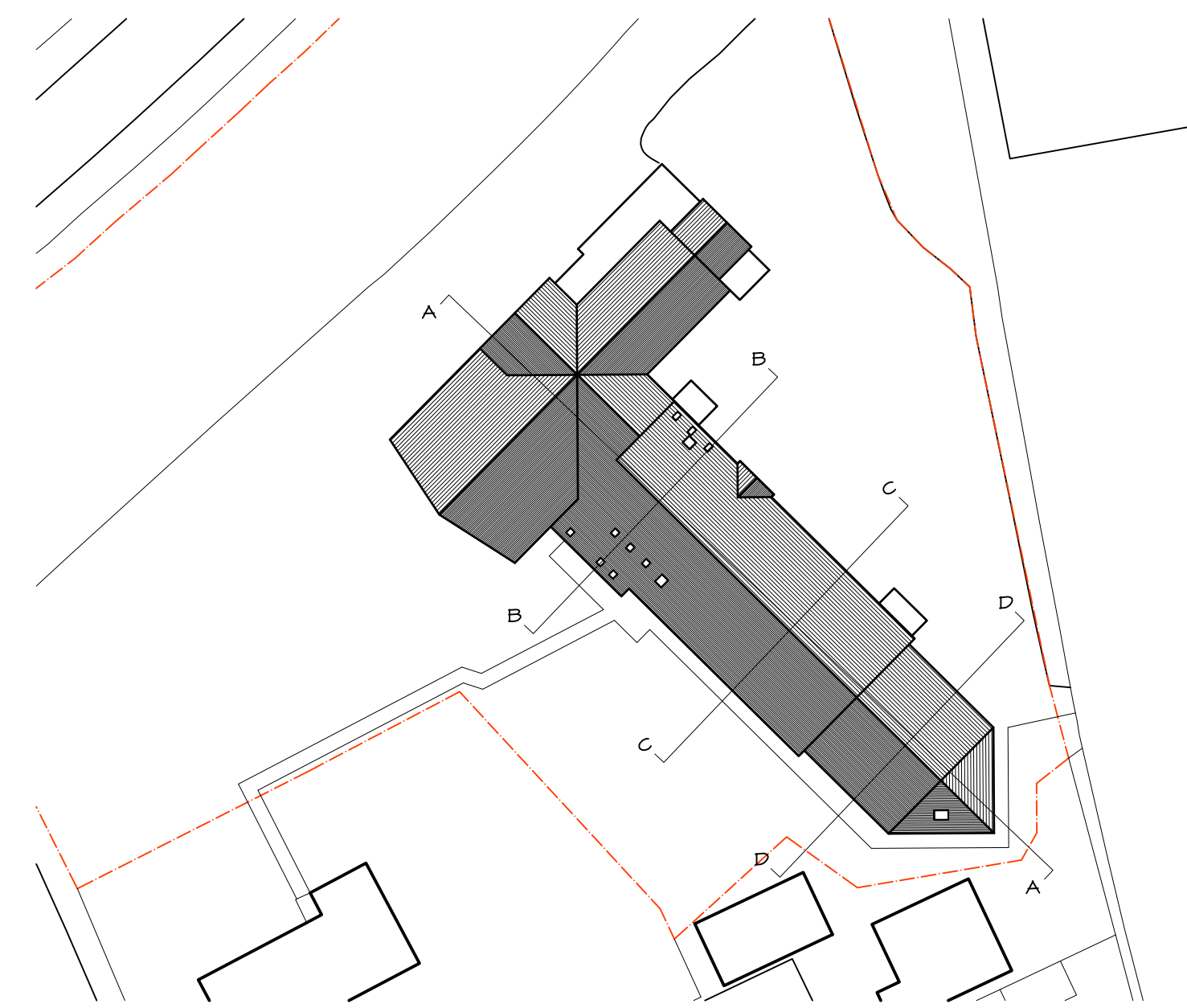
BB  
007 Mackworth Community Centre, Mackworth  
Section B-B 1:100



CC  
007 Mackworth Community Centre, Mackworth  
Section C-C 1:100



DD  
007 Mackworth Community Centre, Mackworth  
Section D-D 1:100



007 Mackworth Community Centre, Mackworth  
Section Legend 1:500

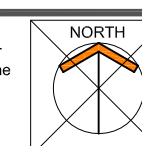
NOTES

COPYRIGHT ©

This drawing is copyright and issued to you in confidence. It must not be copied, used or disclosed, in whole or in part, to third parties without our written permission. It remains the property of JUSTIN SMITH ARCHITECT LIMITED and must be returned on request. ©

NOTE:

All dimensions are in millimetres unless stated otherwise. If in doubt ask. Do not scale from this drawing.  
DRAWING INFORMATION  
This CAD drawing is plotted from file: A10-009A2.1007  
This CAD drawing contains the Xref's: A10-009A2.2/E\_x\_sect



REVISIONS

NO.	DESCRIPTION

CLIENT

Paul Pegg  
PROJECT  
Refurbishment at: Mackworth Community Centre, Mackworth  
DRAWING  
Existing Sections  
PROJECT NO. A10-009 DWG. NO. 007 REV. 007 STATUS For Info.  
DATE April 2010 SCALE 1:100 DWG. SIZE A1 DRAWN SCG

Justin Smith Architect Limited

Friar Gate Studios,  
Ford Street, Derby, DE1 1EE  
T: 01332 258350  
E: mail@justin-smith-architects.co.uk  
W: www.justin-smith-architects.co.uk

JUSTIN SMITH  
ARCHITECTS